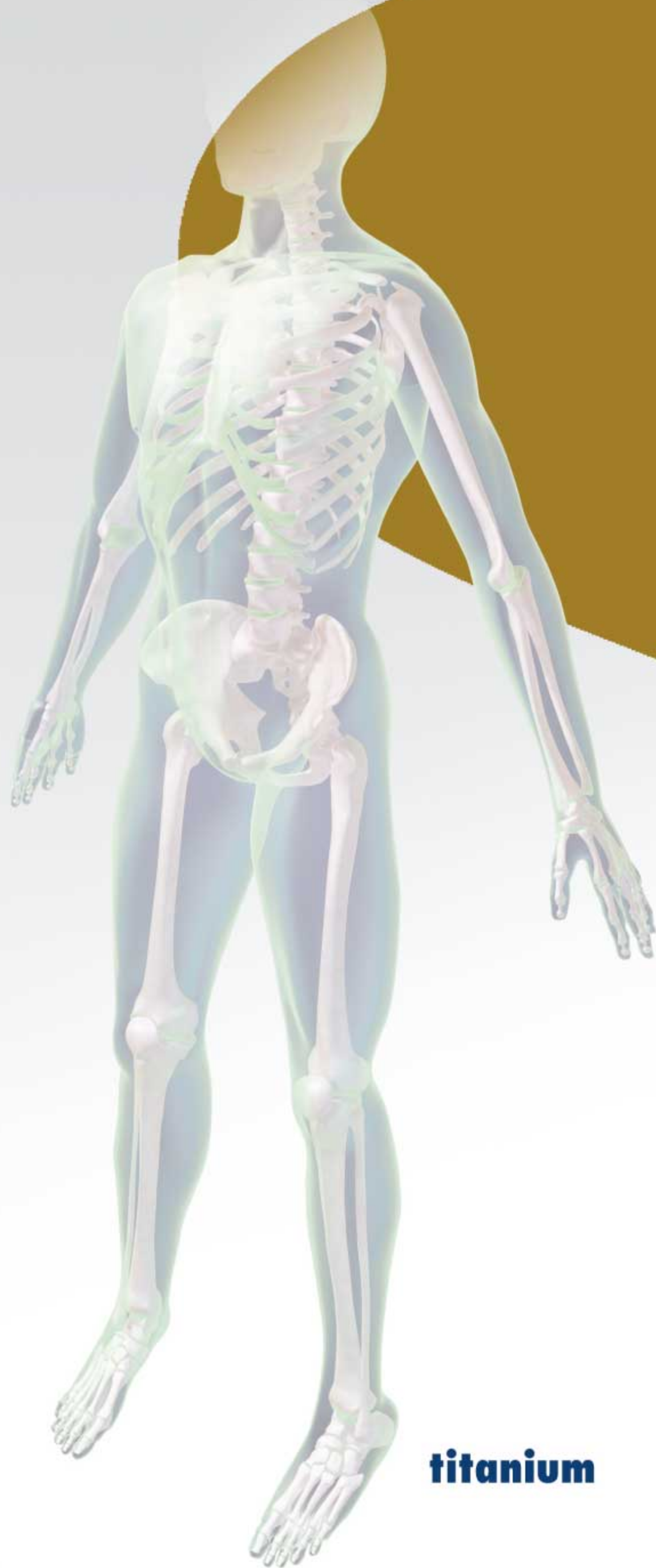


Locking Plates & Screws



titanium



Preoperative



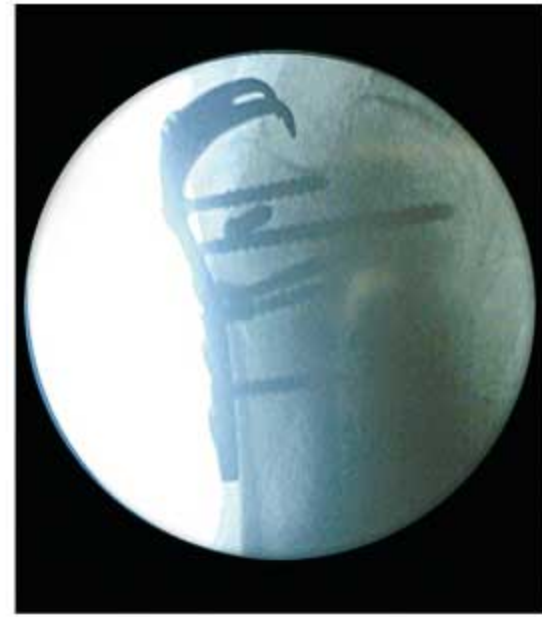
Postoperative



Preoperative



Postoperative



Postoperative



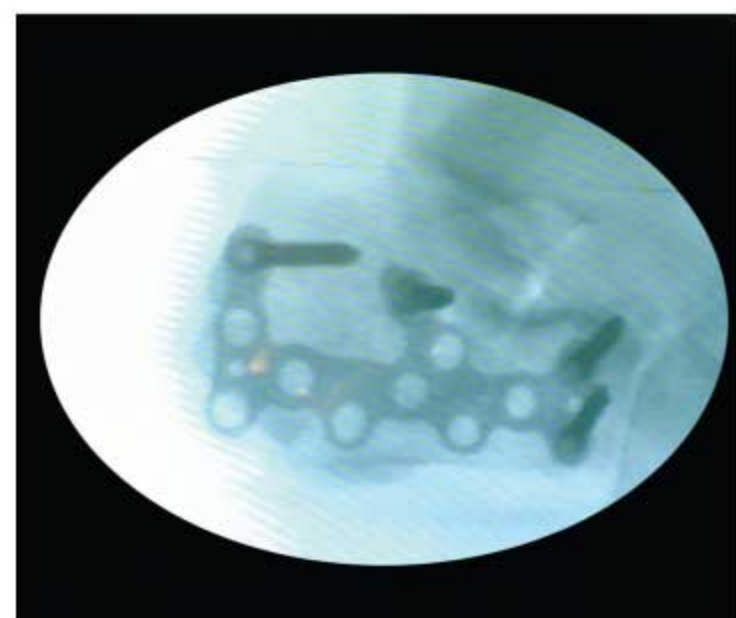
Postoperative



Postoperative



Postoperative



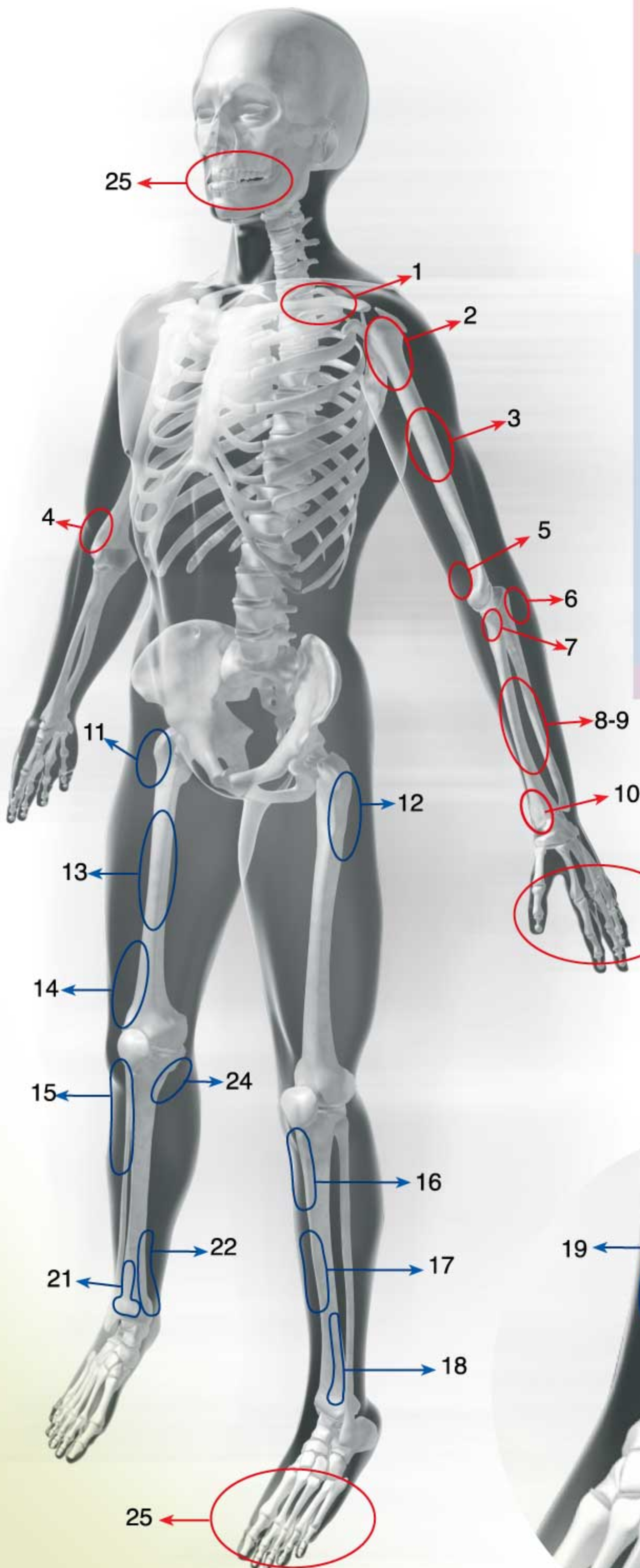
Postoperative

● **Upper Extremity**

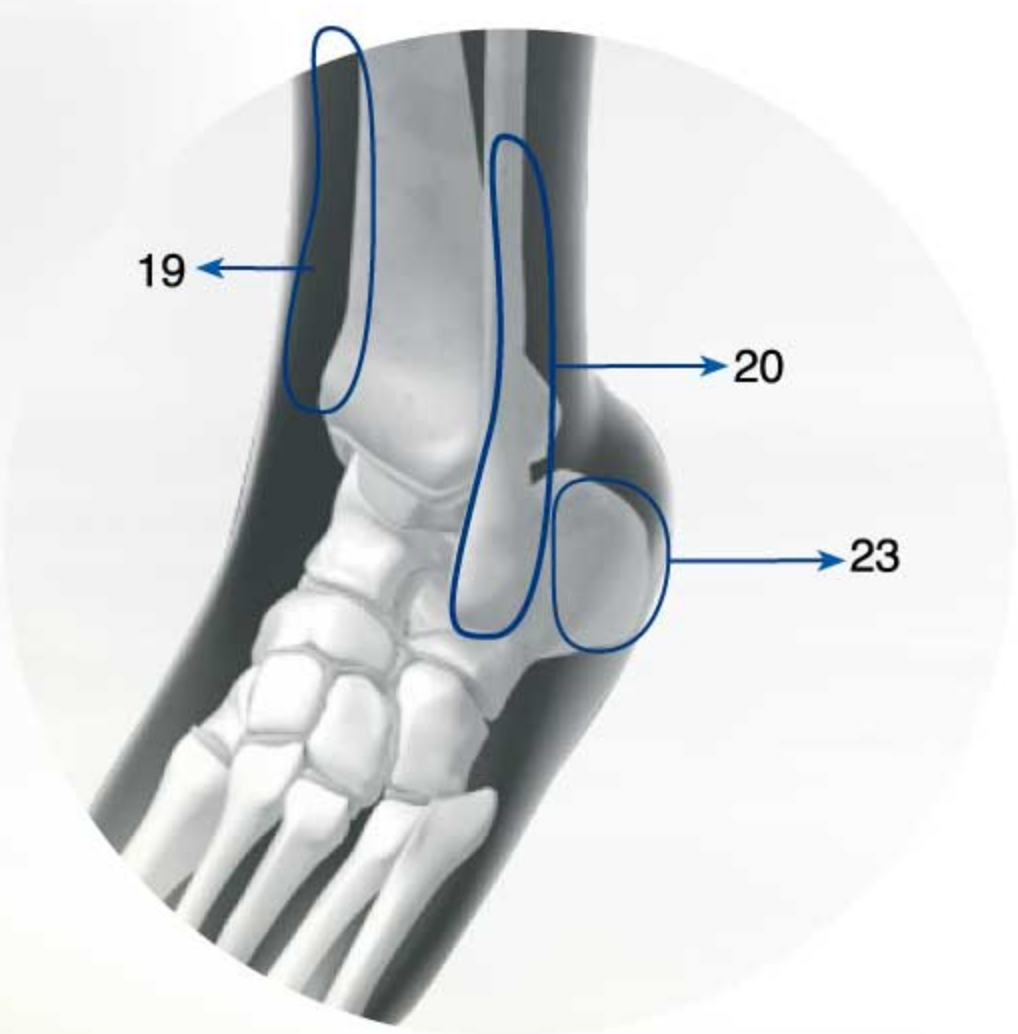
Low Profile Clavicle Locking Plate _____	5
Low Profile Proximal Humerus Locking Plate _____	5
LC DCP Lock Hume Plate _____	6
Low Profile Distal Humerus (Elbow) Locking Plate-Lateral-R-L _____	6
Low Profile Distal Humerus (Elbow) Locking Plate Medial _____	6
Low Profile Olecranon Locking Plate _____	7
Low Profile Radial Head Locking Plate _____	7
Low Profile Coronoid Plate _____	7
DCP Ulna-Radius Locking Plate _____	8
1/3 Ulna-Radius Locking Plate _____	8
DCP Rekonstruction Locking Plate _____	9
Low Profile Distal Radius Locking Plate _____	9
Upper Extremity Locking – Usual Screws _____	10
Upper Extremity Set _____	11

● **Lower Extremity**

Trochanter Femoral Locking Plate _____	12
Proximal Femur Anatomic Locking Plate _____	12
LC DCP Bow – Lock Femoral Plate _____	13
Distal Femur Anatomic Locking Plate – Lateral _____	13
Proximal Tibia Anatomic Locking Plate – Lateral _____	14
Proximal Tibia Anatomic Locking Plate – Medial _____	14
LC DCP Tibia Locking Plate _____	15
Distal Tibia Anterior Malleolar Locking Plate _____	15
Distal Tibia Medial Malleolar Locking Plate _____	15
Distal Tibia Anatomic Locking Plate – Lateral _____	16
Distal Tibia Anatomic Locking Plate – Medial _____	16
Distal Fibula Locking Plate _____	17
Calcaneus Locking Plate _____	17
Locking – Usual Screws For Lower Extremity _____	18
Lower Extremity Set _____	19
Headless Cannulated Compression Screws – HCCS _____	20
HCCS Sets _____	21
Cannulated Screws Ø4mm – Ø6,5mm _____	21
Maxillo Facial Plates And Screws _____	22
Owo Plate Opening Wedge Osteotomy _____	23
Owo Instruments _____	24
Owo Set _____	25
Titanium Elastic Pin (Tep) _____	26
Cable – Swage _____	27



- 1 - Clavicle Lock Plate
- 2 - Proximal Lock Humerus Plate
- 3 - LC DCP Lock Hume Plate
- 4 - Distal Humerus Lock Plate - Lateral
- 5 - Distal Humerus Lock Plate - Medial
- 6 - Olecranon Lock Plate
- 7 - Proximal Radius Head Plate
- 8 - DCP Ulna-Radius Lock Plate
- 9 - 1/3 Ulna Radius Lock Plate
- 10 - Distal Radius Lock Plate
- 11 - Trochanter Femur Lock Plate
- 12 - Proximal Femur Lock Plate
- 13 - LC DCP Bow Lock Femoral Plate
- 14 - Distal Femur Lock Plate - Lateral
- 15 - Proximal Tibia Lock Plate - Lateral
- 16 - Proximal Tibia Lock Plate - Medial
- 17 - LC DCP Tibia Lock Plate
- 18 - Distal Tibia Lock Plate - Lateral
- 19 - Distal Tibia Lock Plate - Medial
- 20 - Distal Fibula Lock Plate
- 21 - Distal Tibia Anterior Malleolar Plate
- 22 - Distal Tibia Medial Malleolar Plate
- 23 - Calcaneus Lock Plate
- 24 - Owo Plate
- 25 - Maxillo Facial Plates



Low Profile Clavicle Plate

Type	Code
4 Holes Right	36625700004
4 Holes Left	36626700004
6 Holes Right	36625700006
6 Holes Left	36626700006
8 Holes Right	36625700008
8 Holes Left	36626700008



Low Profile Proximal Humerus Locking Plate

Type	Code
10 Holes Right	34625700010
10 Holes Left	34626700010
12 Holes Right	34625700012
12 Holes Left	34626700012
14 Holes Right	34625700014
14 Holes Left	34626700014



Low Profile Locking Humerus Plate (Cloverleaf)

Type	Code
10 Holes	34627000010
11 Holes	34627000011



LCP DCP Lock Hume Plate

Type	Code
4 Holes	31727000004
5 Holes	31727000005
6 Holes	31727000006
7 Holes	31727000007
8 Holes	31727000008
9 Holes	31727000009
10 Holes	31727000010
11 Holes	31727000011
12 Holes	31727000012
13 Holes	31727000013



Low Profile Distal Humerus Lock Plate Lateral (Elbow)

Type	Code
8 Holes Right	35325701008
8 Holes Left	35326701008
9 Holes Right	35325701009
9 Holes Left	35326701009
10 Holes Right	35325701010
10 Holes Left	35326701010



Low Profile Distal Humerus Lock Plate Medial (Elbow)

Type	Code
8 Holes	35227002008
10 Holes	35227002010
12 Holes	35227002012



Low Profile Olecranon Locking Plate



Type	Code
8 Holes	34727000008
10 Holes	34727000010
12 Holes Right	34727500012
12 Holes Left	34727600012

Low Profile Radial Head Locking Plate



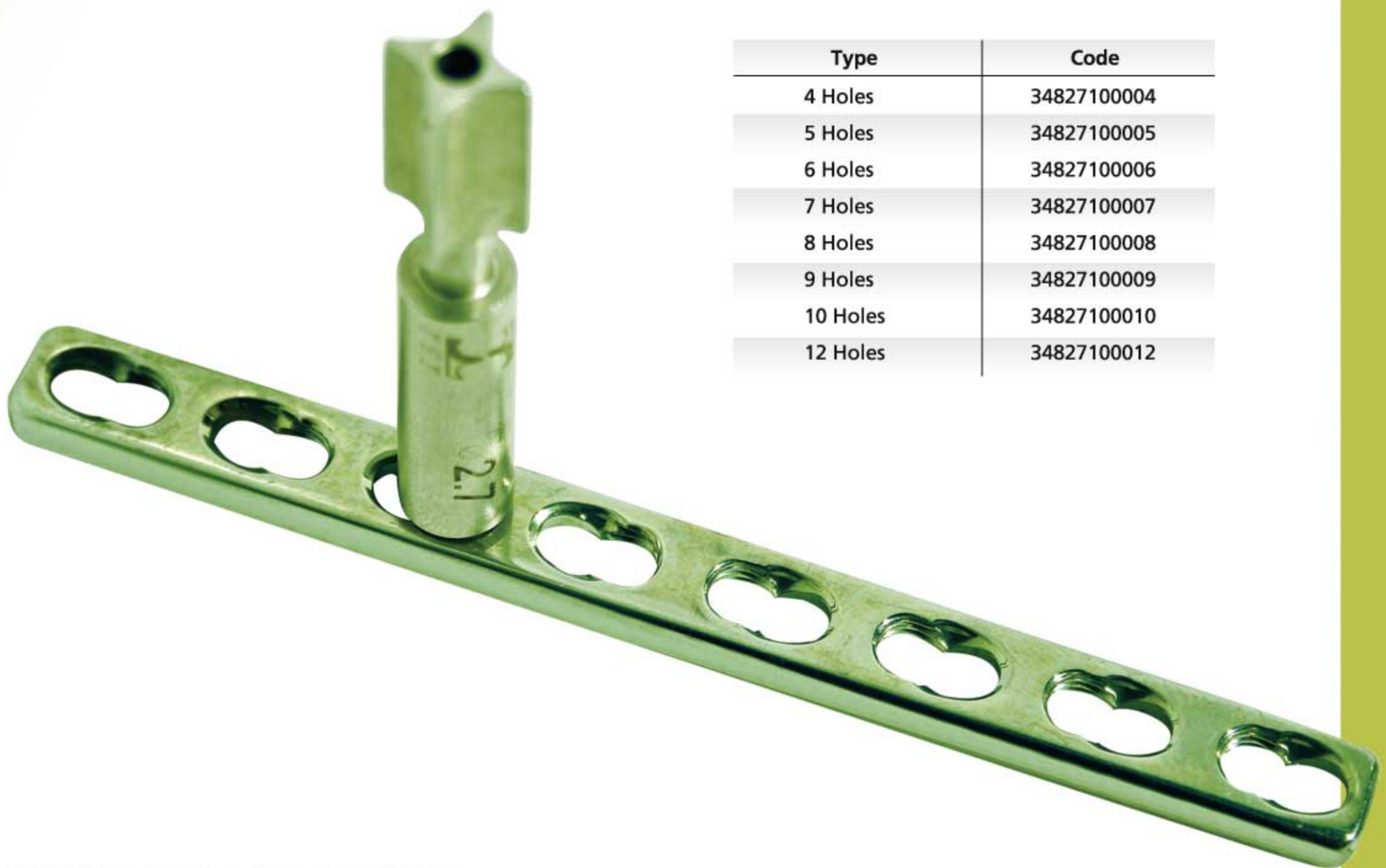
Type	Code
7 Holes	36920700007

Low Profile Coronoid Plate



Type	Code
Right	36825700000
Left	36826700000

Low Profile DCP Ulna Radius Locking Plate



Type	Code
4 Holes	34827100004
5 Holes	34827100005
6 Holes	34827100006
7 Holes	34827100007
8 Holes	34827100008
9 Holes	34827100009
10 Holes	34827100010
12 Holes	34827100012

1/3 Ulna Radius Locking Plate



Type	Code
4 Holes	34827000004
5 Holes	34827000005
6 Holes	34827000006
7 Holes	34827000007
8 Holes	34827000008
9 Holes	34827000009
10 Holes	34827000010
12 Holes	34827000012

DCP Reconstruction Locking Plate (3.5 mm)



Type	Code 3.5 mm
4 Holes	31027010004
6 Holes	31027010006
8 Holes	31027010008
10 Holes	31027010010
12 Holes	31027010012
14 Holes	31027010014

Low Profile Distal Radius Locking Plate



Type	Code
9 Holes Right	34525000009
9 Holes Left	34526000009
10 Holes Right	34525000010
10 Holes Left	34526000010

Locking and Usual Screws - For Upper Extremity (Self Tapping)



Cortical Screw 2,7 mm

Type	Code
2,7 x 12 mm	20127120027
2,7 x 14 mm	20127140027
2,7 x 16 mm	20127160027
2,7 x 18 mm	20127180027
2,7 x 20 mm	20127200027
2,7 x 22 mm	20127220027
2,7 x 24 mm	20127240027
2,7 x 26 mm	20127260027
2,7 x 28 mm	20127280027
2,7 x 30 mm	20127300027
2,7 x 32 mm	20127320027
2,7 x 34 mm	20127340027
2,7 x 36 mm	20127360027
2,7 x 38 mm	20127380027
2,7 x 40 mm	20127400027

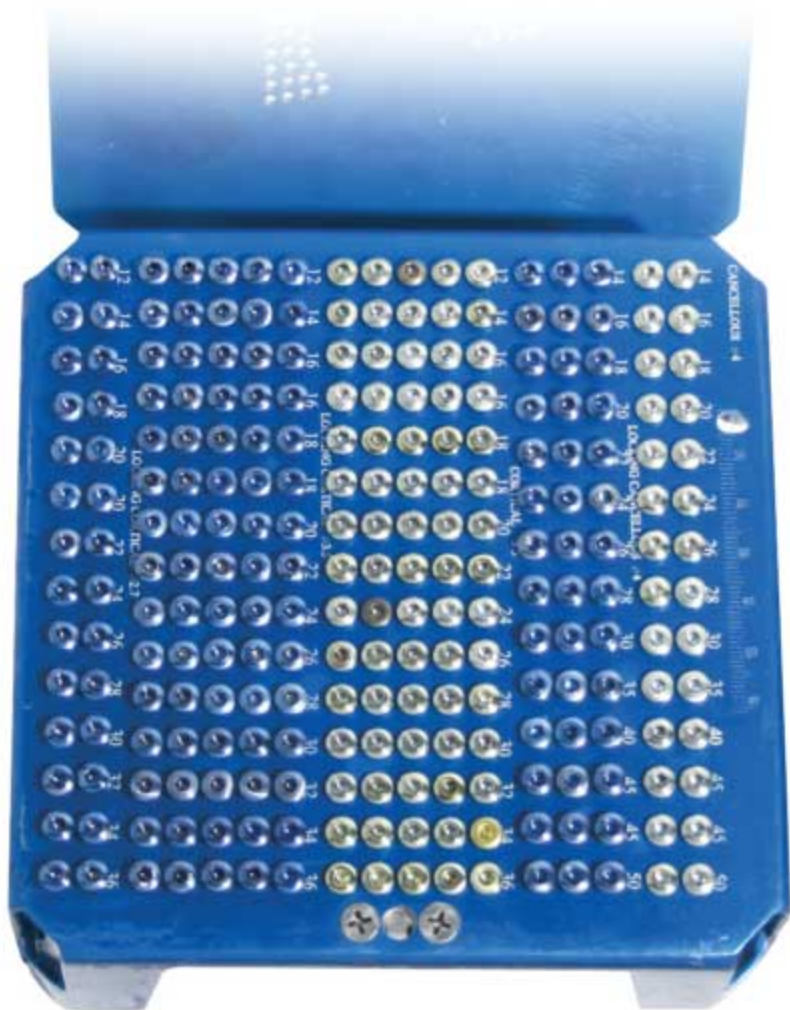
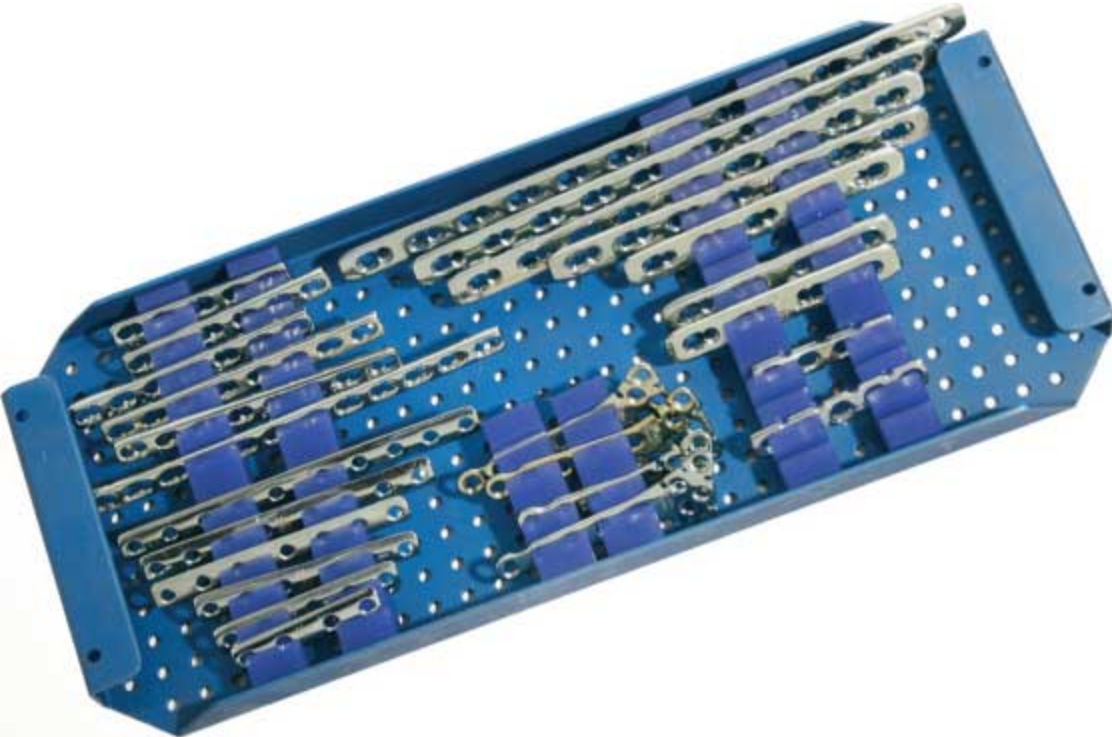
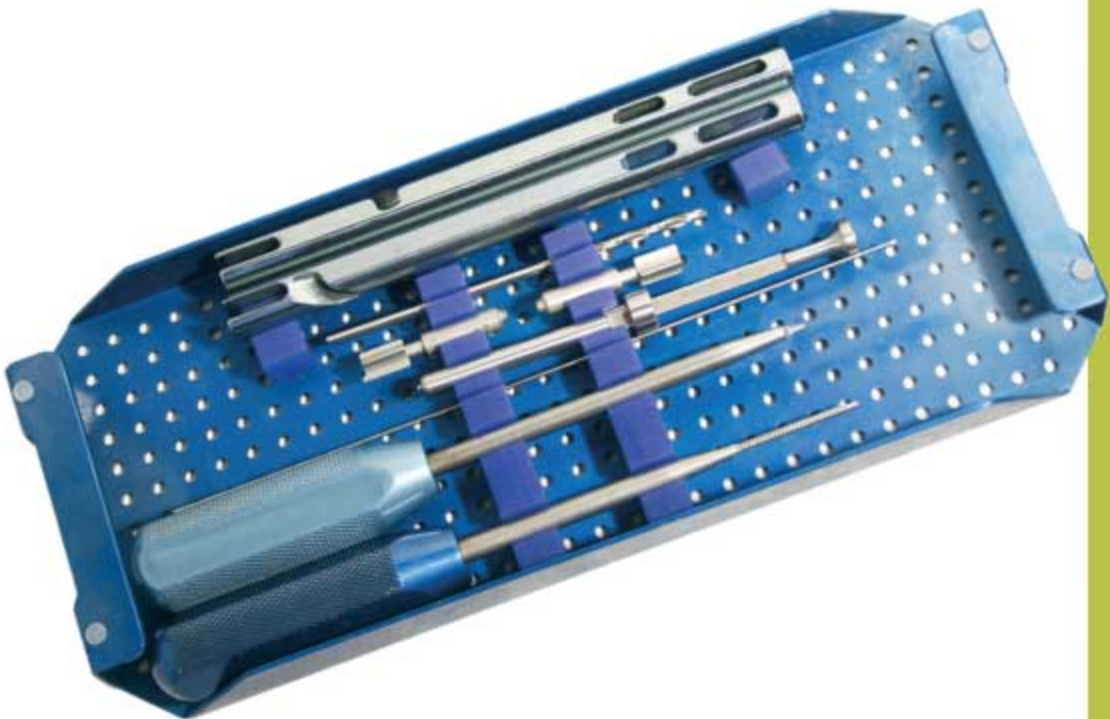
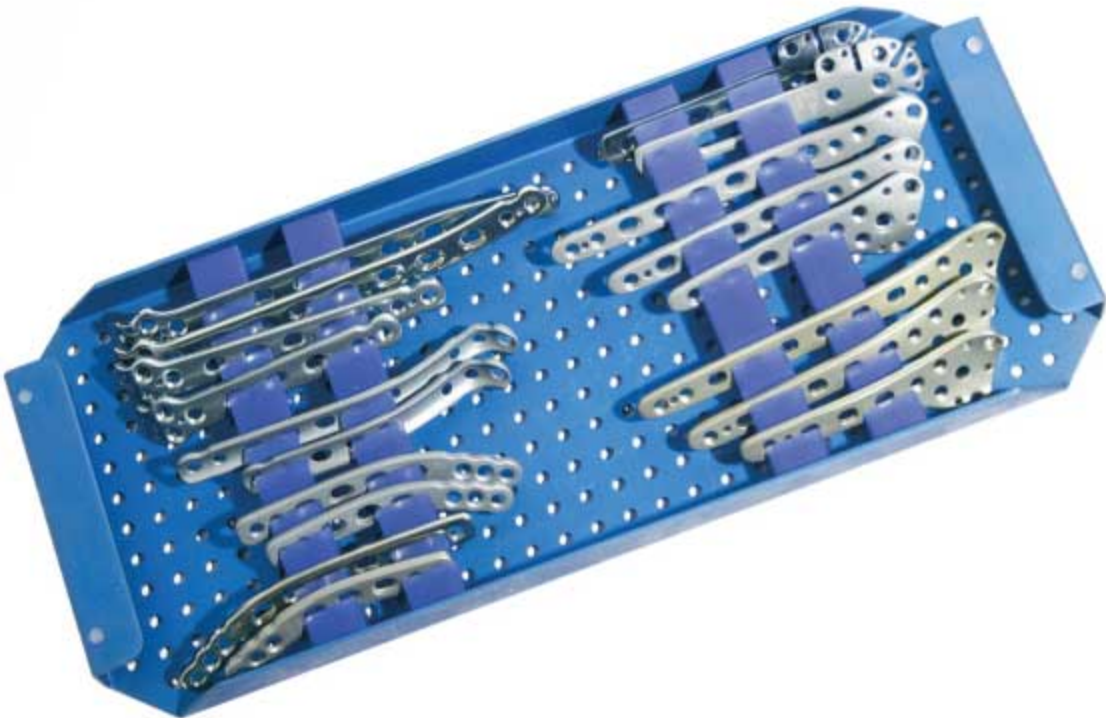
Cortical Screw Ø 3,5 mm

Type	Code	Code
3,5 mm	usual	locking
3,5 x 12 mm	20120120035	20127120035
3,5 x 14 mm	20120140035	20127140035
3,5 x 16 mm	20120160035	20127160035
3,5 x 18 mm	20120180035	20127180035
3,5 x 20 mm	20120200035	20127200035
3,5 x 22 mm	20120220035	20127220035
3,5 x 24 mm	20120240035	20127240035
3,5 x 26 mm	20120260035	20127260035
3,5 x 28 mm	20120280035	20127280035
3,5 x 30 mm	20120300035	20127300035
3,5 x 32 mm	20120320035	20127320035
3,5 x 34 mm	20120340035	20127340035
3,5 x 36 mm	20120360035	20127360035
3,5 x 38 mm	20120380035	20127380035
3,5 x 40 mm	20120400035	20127400035
3,5 x 42 mm	20120420035	20127420035
3,5 x 44 mm	20120440035	20127440035
3,5 x 46 mm	20120460035	20127460035
3,5 x 48 mm	20120480035	20127480035
3,5 x 50 mm	20120500035	20127500035

Cancellous Ø 4 mm

Type	Code	Code
	locking	usual
4 x 14 mm	20427140040	20420140040
4 x 16 mm	20427160040	20420160040
4 x 18 mm	20427180040	20420180040
4 x 20 mm	20427200040	20420200040
4 x 22 mm	20427220040	20420220040
4 x 24 mm	20427240040	20420240040
4 x 26 mm	20427260040	20420260040
4 x 28 mm	20427280040	20420280040
4 x 30 mm	20427300040	20420300040
4 x 32 mm	20427320040	20420320040
4 x 34 mm	20427340040	20420340040
4 x 36 mm	20427360040	20420360040
4 x 38 mm	20427380040	20420380040
4 x 40 mm	20427400040	20420400040
4 x 42 mm	20427420040	20420420040
4 x 44 mm	20427440040	20420440040
4 x 46 mm	20427460040	20420460040
4 x 48 mm	20427480040	20420480040
4 x 50 mm	20427500040	20420500040

Upper Extremity Set



Trochanter Femoral Locking Plate

Type	Code
3 HOLES SHORT	36827000003
5 HOLES STANDART	36827000002
7 HOLES LONG	36827000001



Proximal Femur Anatomic Locking Plate

Holes	Code
7 HOLES L	31626700107
7 HOLES R	31625700107
9 HOLES L	31626700109
9 HOLES R	31625700109
11 HOLES L	31626700111
11 HOLES R	31625700111
13 HOLES L	31626700113
13 HOLES R	31625700113



LC DCP Bow Lock Femoral Plate



Holes	Code
6 HOLES	30227000006
7 HOLES	30227000007
8 HOLES	30227000008
9 HOLES	30227000009
10 HOLES	30227000010
11 HOLES	30227000011
12 HOLES	30227000012
13 HOLES	30227000013
14 HOLES	30227000014
15 HOLES	30227000015

Distal Femur Anatomic Locking Plate - Lateral



Holes	Code
7 HOLES L	35126700107
7 HOLES R	35125700107
9 HOLES L	35126700109
9 HOLES R	35125700109
11 HOLES L	35126700111
11 HOLES R	35125700111
13 HOLES L	35126700113
13 HOLES R	35125700113

Proximal Tibia Anatomic Locking Plate - Lateral



Holes	Code
7 HOLES L	35026700107
7 HOLES R	35025700107
9 HOLES L	35026700109
9 HOLES R	35025700109
11 HOLES L	35026700111
11 HOLES R	35025700111
13 HOLES L	35026700113
13 HOLES R	35025700113

Proximal Tibia Anatomic Locking Plate - Medial



Holes	Code
7 HOLES L	35026700207
7 HOLES R	35025700207
9 HOLES L	35026700209
9 HOLES R	35025700209
11 HOLES L	35026700211
11 HOLES R	35025700211
13 HOLES L	35026700213
13 HOLES R	35025700213

LC DCP Tibial Locking Plate



Holes	Code
4 HOLES	30127000004
5 HOLES	30127000005
6 HOLES	30127000006
7 HOLES	30127000007
8 HOLES	30127000008
9 HOLES	30127000009
10 HOLES	30127000010
11 HOLES	30127000011
12 HOLES	30127000012
13 HOLES	30127000013

Distal Tibial Anterior Malleolar Locking Plate

Holes	Code
8 HOLES	36720700308



Distal Tibial Medial Malleolar Locking Plate

Holes	Code
9 HOLES	36620700209



Distal Tibia Anatomic Locking Plate - Lateral



Holes	Code
7 HOLES L	34926700107
7 HOLES R	34925700107
9 HOLES L	34926700109
9 HOLES R	34925700109
11 HOLES L	34926700111
11 HOLES R	34925700111
13 HOLES L	34926700113
13 HOLES R	34925700113

Distal Tibia Anatomic Locking Plate - Medial



Holes	Code
7 HOLES L	34926700207
7 HOLES R	34925700207
9 HOLES L	34926700209
9 HOLES R	34925700209
11 HOLES L	34926700211
11 HOLES R	34925700211
13 HOLES L	34926700213
13 HOLES R	34925700213

Distal Fibula Locking Plate

Holes	Code
6 HOLES L	36526700006
6 HOLES R	36525700006
8 HOLES L	36526700008
8 HOLES R	36525700008
10 HOLES L	36526700010
10 HOLES R	36525700010
12 HOLES L	36526700012
12 HOLES R	36525700012



Calcaneus Locking Plate



Type	Code
SHORT L - R	35125010000
STANDARD L - R	35125020000
LONG L - R	35125030000

Locking and Usual Screws - For Lower Extremity (Self Tapping)



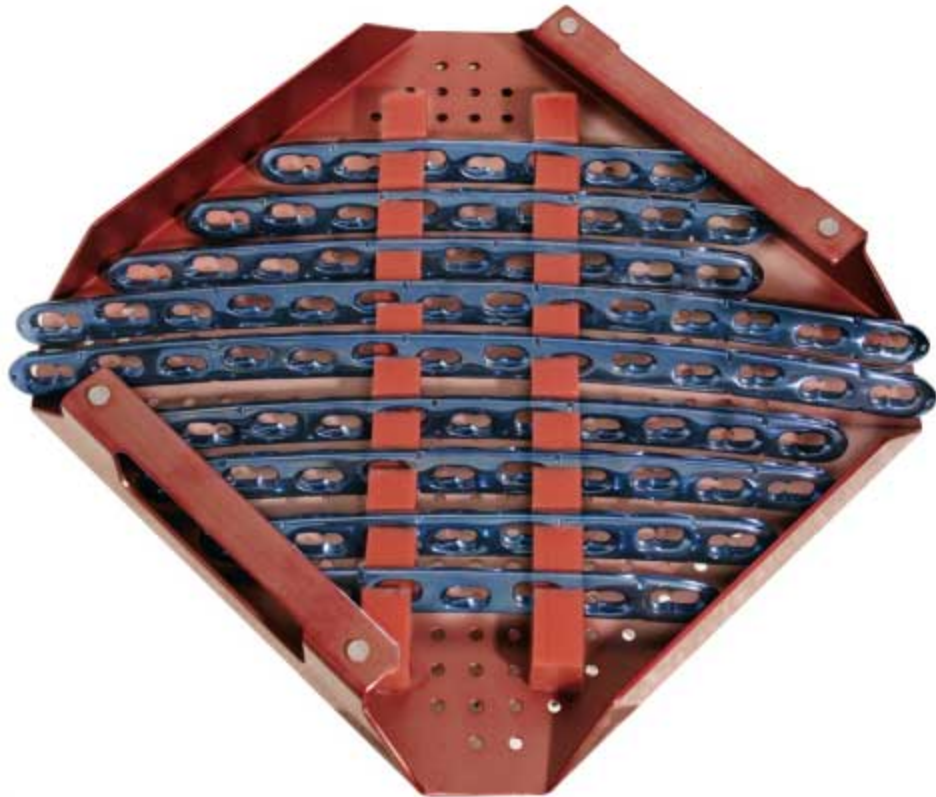
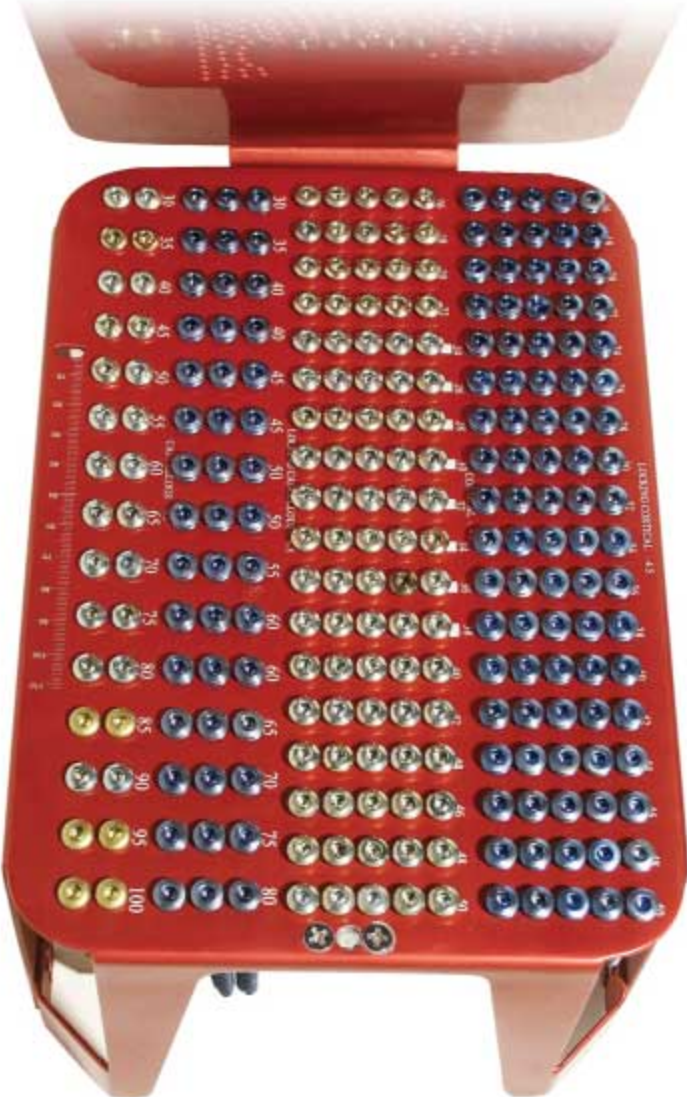
Cancellous Ø 6,5 mm

Type	Code	Code
	locking	usual
6,5 x 25 mm	20427250065	20420253265
6,5 x 30 mm	20427300065	20420303265
6,5 x 35 mm	20427350065	20420353265
6,5 x 40 mm	20427400065	20420403265
6,5 x 45 mm	20427450065	20420453265
6,5 x 50 mm	20427500065	20420503265
6,5 x 55 mm	20427550065	20420553265
6,5 x 60 mm	20427600065	20420603265
6,5 x 65 mm	20427650065	20420653265
6,5 x 70 mm	20427700065	20420703265
6,5 x 75 mm	20427750065	20420753265
6,5 x 80 mm	20427800065	20420803265
6,5 x 85 mm	20427850065	20420853265
6,5 x 90 mm	20427900065	20420903265
6,5 x 95 mm	20427950065	20420953265
6,5 x 100 mm		20421003265
6,5 x 105 mm		20421053265
6,5 x 110 mm		20421103265
6,5 x 115 mm		20421153265

Cortical Screw Ø 4,5 mm

Type	Code	Code
	locking	usual
4,5 x 12 mm	20227120045	20220120045
4,5 x 14 mm	20227140045	20220140045
4,5 x 16 mm	20227160045	20220160045
4,5 x 18 mm	20227180045	20220180045
4,5 x 20 mm	20227200045	20220200045
4,5 x 22 mm	20227220045	20220220045
4,5 x 24 mm	20227240045	20220240045
4,5 x 26 mm	20227260045	20220260045
4,5 x 28 mm	20227280045	20220280045
4,5 x 30 mm	20227300045	20220300045
4,5 x 32 mm	20227320045	20220320045
4,5 x 34 mm	20227340045	20220340045
4,5 x 36 mm	20227360045	20220360045
4,5 x 38 mm	20227380045	20220380045
4,5 x 40 mm	20227400045	20220400045
4,5 x 42 mm	20227420045	20220420045
4,5 x 44 mm	20227440045	20220440045
4,5 x 46 mm	20227460045	20220460045
4,5 x 48 mm	20227480045	20220480045
4,5 x 50 mm	20227500045	20220500045
4,5 x 52 mm	20227520045	20220520045
4,5 x 54 mm	20227540045	20220540045
4,5 x 56 mm	20227560045	20220560045
4,5 x 58 mm	20227580045	20220580045
4,5 x 60 mm	20227600045	20220600045
4,5 x 62 mm	20227620045	20220620045
4,5 x 64 mm	20227640045	20220640045
4,5 x 66 mm	20227660045	20220660045
4,5 x 68 mm	20227680045	20220680045
4,5 x 70 mm	20227700045	20220700045

Lower Extremity Set



HCCS Headless Cannulated Compression Screws Mini - Standard - Plus



Mini Type	Code	Standard Type	Code	Plus Type	Code
Mini Headless CC Screws Ø 3,3X3,8 mm conic		Standard Headless CC Screws Ø 4,0X4,2 mm conic		Plus Headless CC Screws Ø 5,0x5,5 mm conic	
3,3x3,8x12,5 mm	20623338125	4,0x4,2x20 mm	20624042200	Ø 5,0 X 5,5 x 35 mm	20625055350
3,3x3,8x15 mm	20623338125	4,0x4,2x25 mm	20624042250	Ø 5,0 X 5,5 x 40 mm	20625055400
3,3x3,8x17,5 mm	20623338125	4,0x4,2x30 mm	20624042300	Ø 5,0 X 5,5 x 45 mm	20625055450
3,3x3,8x20 mm	20623338125	4,0x4,2x35 mm	20624042350	Ø 5,0 X 5,5 x 50 mm	20625055500
3,3x3,8x22,5 mm	20623338125	4,0x4,2x40 mm	20624042400	Ø 5,0 X 5,5 x 55 mm	20625055550
3,3x3,8x25 mm	20623338125	4,0x4,2x45 mm	20624042450	Ø 5,0 X 5,5 x 60 mm	20625055600
3,3x3,8x27,5 mm	20623338125	4,0x4,2x50 mm	20624042500	Ø 5,0 X 5,5 x 65 mm	20625055650
3,3x3,8x30 mm	20623338125			Ø 5,0 X 5,5 x 70 mm	20625055700
				Ø 5,0 X 5,5 x 75 mm	20625055750
				Ø 5,0 X 5,5 x 80 mm	20625055800

Instruments

Cannulated Screw Driver Hexalob 2.69	02066000269
Cannulated Drill 2.5X1.2X3.0X120 mm	02066251212
Depth Gauge (0-50 mm)	02005000500
Guide Wire 1.0 mm X 180 mm	02061010180

Instruments

Cannulated Screw Driver Hexalob 2.69	02066000269
Cannulated Drill 3.2X1.2X5.0X120 mm	02066251212
Guide Wire 1.0 mm X 180 mm	02061010180
Depth Gauge (0-50 mm)	02005000500

Instruments

Guide Wire 1.5 mm X 180 mm	02061010180
Cannulated Drill 3.8X1.8X80X160 mm	02066251212
Cannulated Screw Driver Hexalob 3.2mm	02066000269
Depth Gauge (30-80 mm)	02005000500



Cannulated Screws Ø4 mm and Ø6.5 mm

Ø 4 mm

Type	Code
22 mm	20520221640
24 mm	20520241640
26 mm	20520261640
28 mm	20520281640
30 mm	20520301640
35 mm	20520351640
40 mm	20520401640
45 mm	20520451640
50 mm	20520501640
55 mm	20520551640
60 mm	20520601640
65 mm	20520651640
70 mm	20520701640

Ø 6.5 mm (32mm thread)

Type	Code
30 mm	20520303265
35 mm	20520353265
40 mm	20520403265
45 mm	20520453265
50 mm	20520503265
55 mm	20520553265
60 mm	20520603265
65 mm	20520653265
70 mm	20520703265
75 mm	20520753265
80 mm	20520803265
85 mm	20520853265
90 mm	20520903265
95 mm	20520953265
100 mm	20521003265



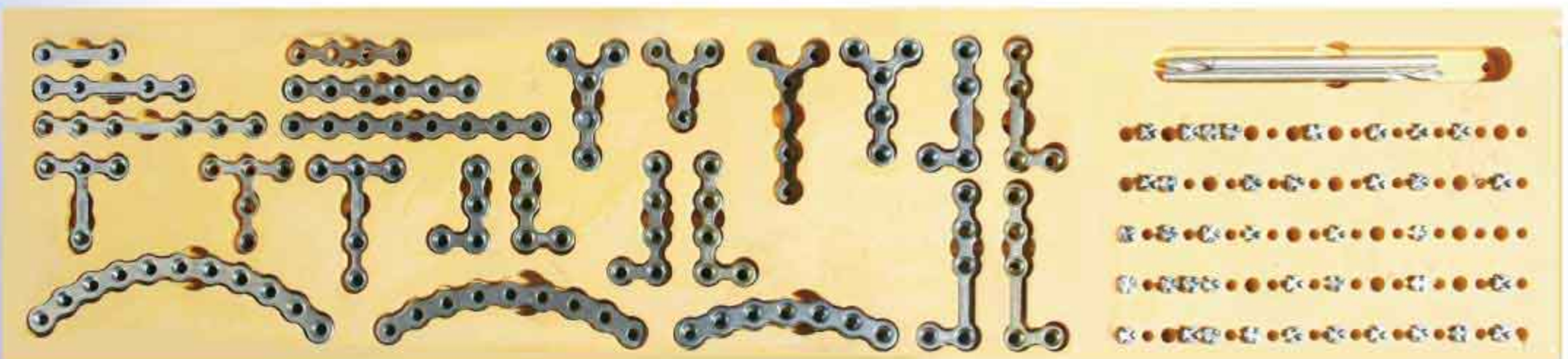
Maxillo - Facial Plate and Screws



Instruments

36020010002	Straight Plate Long 2 Holes
36020010004	Straight Plate Long 4 Holes
36020010006	Straight Plate Long 6 Holes
36220010004	T Plate Long 4 Holes
36220010005	T Plate Long 5 Holes
36220000005	T Plate Regular 5 Holes
35820010004	Y Plate Long 4 Holes
35820010005	Y Plate Long 5 Holes
35820000004	Y Plate Regular 4 Holes
35820000005	Y Plate Regular 5 Holes
35920000007	Orbital Plate 7 Holes
35920000009	Orbital Plate 9 Holes
35920000011	Orbital Plate 11 Holes
35725010004	L Plate Right Long 4 Holes
35725010005	L Plate Right Long 5 Holes
35726010004	L Plate Left Long 4 Holes
35726010005	L Plate Left Long 5 Holes
35725000004	L Plate Right Regular Long 4 Holes
35725000005	L Plate Right Regular Long 5 Holes
35726000004	L Plate Left Regular Long 4 Holes
35726000005	L Plate Left Regular Long 5 Holes
36120000004	Straight Regular Plate 4 Holes
36120000006	Straight Regular Plate 6 Holes
36120000008	Straight Regular Plate 8 Holes
20120050020	Ø 2X5 mm Cortical Screw
20120070020	Ø 2X7 mm Cortical Screw
20120090020	Ø 2X9 mm Cortical Screw
20120110020	Ø 2X11 mm Cortical Screw

02016000201	Otomatic Screw Driver
02016000200	Screw Driver
03606000010	Pens
03605000010	Trocar
22310080015	Drill 1,5 mm



Owo - Opening Wedge Osteotomy



Type	Code
OWO PLATE L	34326000205
OWO PLATE R	34325000205
OWO BLOCK L 10 mm	34426001000
OWO BLOCK L 12,5 mm	34426001250
OWO BLOCK L 15 mm	34426001500
OWO BLOCK R 10 mm	34425001000
OWO BLOCK R 12,5 mm	34425001250
OWO BLOCK R 15 mm	34425001500
OWO BLOCK SCREW	21620080050



Owo Instruments

WEDGE DOUBLE OSTEOTOM 0343500030



OWO OPENING CANNULATED OSTEOTOM 0343500010



TAP Ø 4.5 MM 07200000450



PLATE GUIDE R 03435500050
PLATE GUIDE L 03435600050



OSTEOTOM 25 MM 03436025000
OSTEOTOM 30 MM 03436030000
OSTEOTOM 35 MM 03436035000



HAMMER 03435000020



DISTRACTOR OSTEOTOM 03435000040



OTOMATIC DISTRACTOR 03435000080



SCREW DRIVER Ø 2.5 MM 02015000250
SCREW DRIVER Ø 3.5 MM 02015000350



PLATE IMPACTOR 03325900000



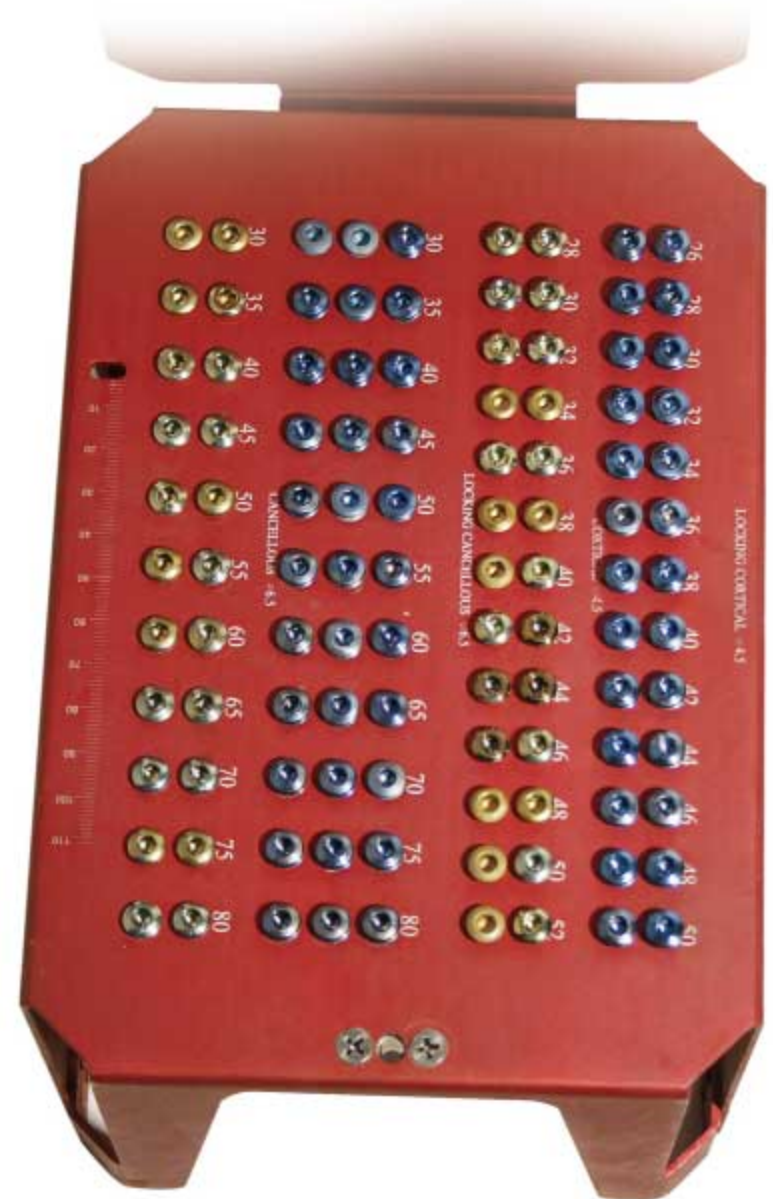
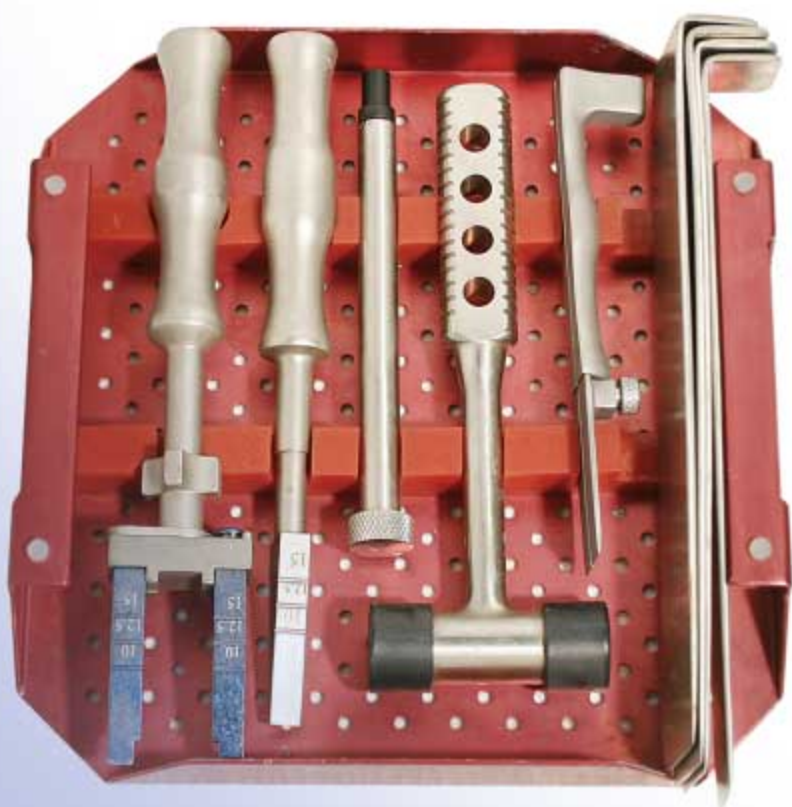
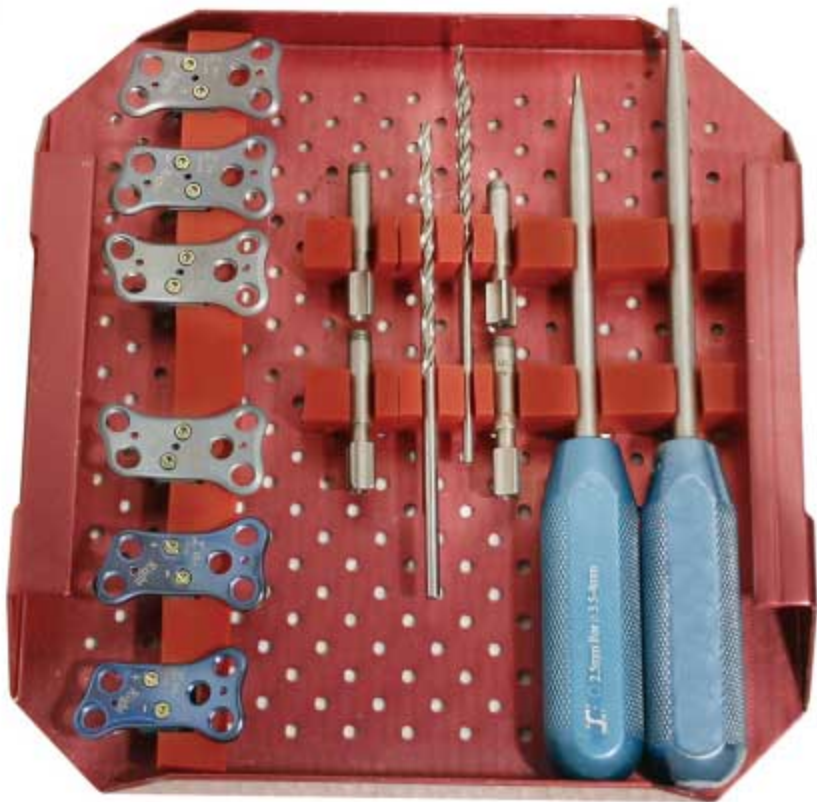
LOCKING DRILL GUIDE Ø 3,5 MM 02005700035
LOCKING DRILL GUIDE Ø 4,5 MM 02005700045



DEPTH GAUGE 16-100 MM 02005001000



Owo Set



Titanium Elastic Pin (TEP)

AWL 0820100003



CURVED AWL 0820100007



TEP STRAIGHT INSERTER 0820100002



CURVED INSERTER 0820100008

PLIERS 0820100004



TEP CANNULATED ISERTER 0820100001



HUMMER 0820100006



TEP CUTTER 0820100005

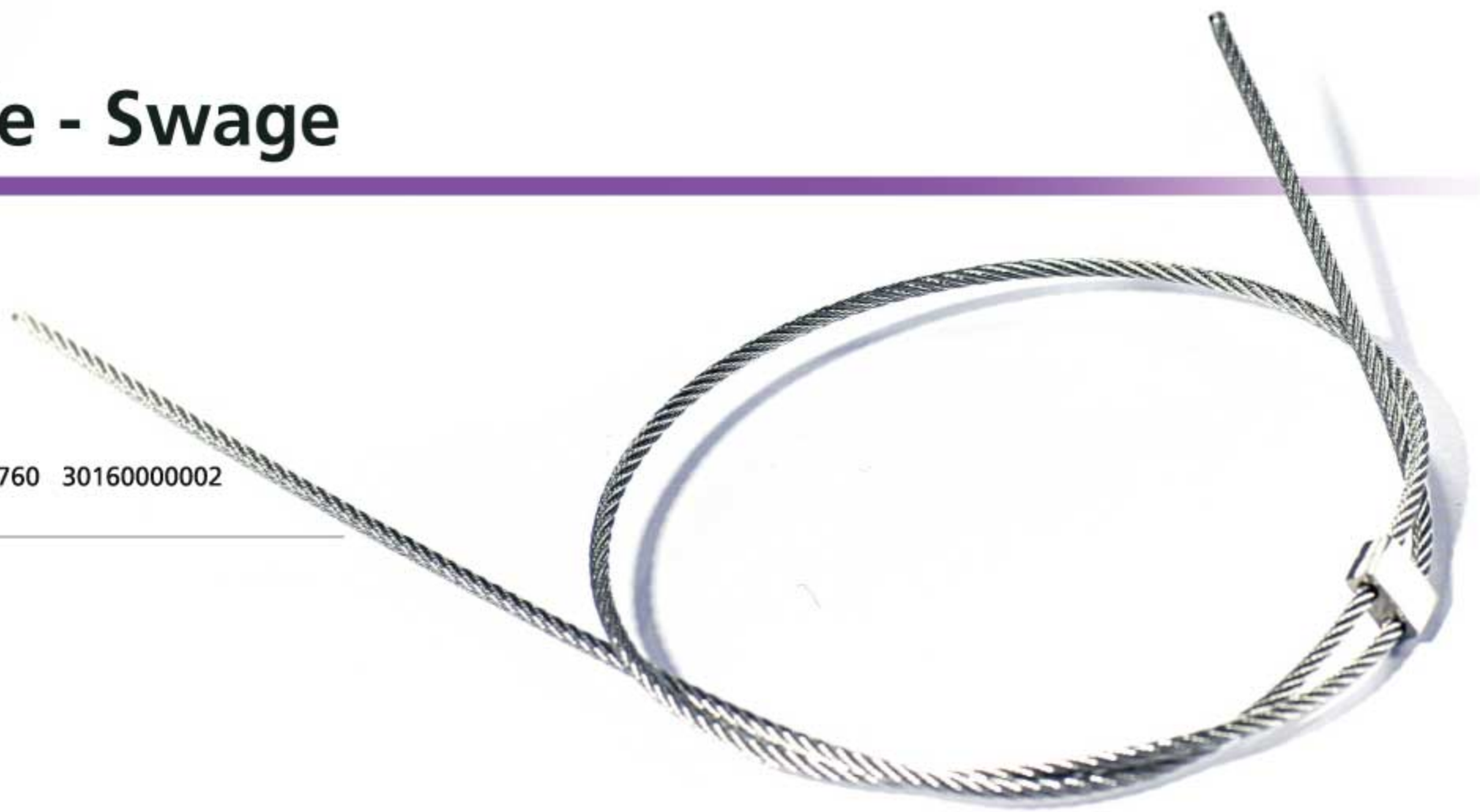


Type	Code
2 X 450 mm	82020450020
2.5 X 450 mm	82020450025
3 X 450 mm	82020450030
3.5 X 450 mm	82020440035
4 X 450 mm	82020450040



Cable - Swage

CABLE Ø2X760 3016000002
SWAGE



CABLE PASSER 30060100020



CABLE TENSIONER 30061000010



SWAGE (GRIBE) TOOL 30061000040



CABLE CUTTER 08201000005





 **tst medical devices**

Factory : Bağdat Cad. Koruma Çıkması No: 7/1
Maltepe - İstanbul / Türkiye

Phone : +90. 216 442 09 71 - +90. 216 305 52 20

Fax : +90. 216 442 09 77

web : www.tstsan.com

e-mail : tst@tstsan.com

Distributor /



CE 0473