

# ORIHOMEDICAL

G m b H · I M P L A N T S



**AKKU - BOHRMASCHINE  
SYSTEM**

**BATTERY - DRIVEN DRILL  
SYSTEM**



- 95-349.00** Akku-Bohrmaschine inkl.: 2 Akkus · Ladegerät / Tisch 220 V · Dreibackenfutter  
Battery-driven drill incl.: 2 batteries · Charger / bench 220 V · three-jaw-chuck
- 95-349.01** Akku-Bohrmaschine inkl.: 2 Akkus · Ladegerät / Tisch 110 V · Dreibackenfutter  
Battery-driven drill incl.: 2 batteries · Charger / bench 110 V · three-jaw-chuck



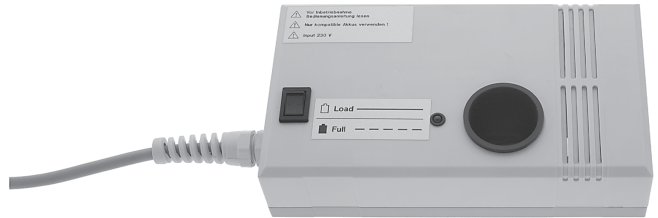
- 95-349.02** Akku-Bohrmaschine allein (ohne Akku)  
Battery-driven drill only (without battery)



Übersicht von Zubehör :  
 Overview for accessories :



**95-349.05** Akku  
 Battery

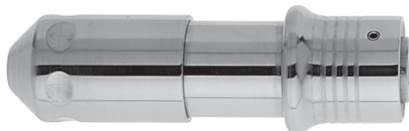


**95.349.10** Ladegerät / Tisch 220 V  
 Charger / bench 220 V

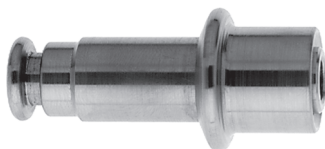
**95-349.11** Ladegerät / Tisch 110 V  
 Charger / bench 110 V



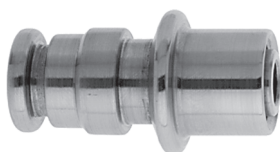
**95-349.15** Dreibackenfutter bis  $\varnothing$  7,0 mm für Rund - und Dreikantschäfte mit Spannschlüssel  
 Three-jaw-chuck up to  $\varnothing$  7,0 mm for round and triangular shanks with chuck key



**95-349.20** Schnellspannfutter für Bohrdrähte von  $\varnothing$  0,8 mm bis  $\varnothing$  3,0 mm  
 Quick-action chuck for drill wires from  $\varnothing$  0,8 mm up to  $\varnothing$  3,0 mm



**95-349.25** Adapter für AO-Ansätze  
 Adaptor for AO



**95-349.30** Adapter für DIN Ansätze (Aesculap)  
 Adaptor for DIN attachments (Aesculap)



**95-349.50** Adapter für Oszillierende Säge  
Standardaufnahme für Sägeblätter AO  
Andere auf Anfrage

Adaptor for Oscillating Saw  
for saw blades AO



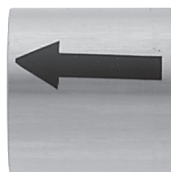
**95-349.55** Adapter für Acetabulumfräser und  
Markraumböhrer mit integrierter  
AO Kupplung 100 U/min

Adaptor for Acetabulum and Medullary Reamers  
with AO coupling 100 rev/min



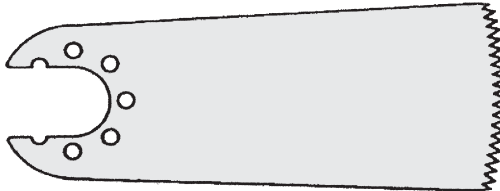
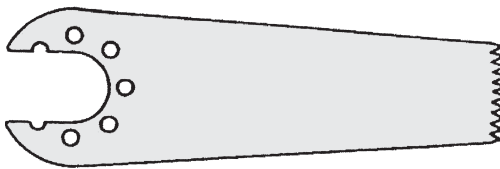

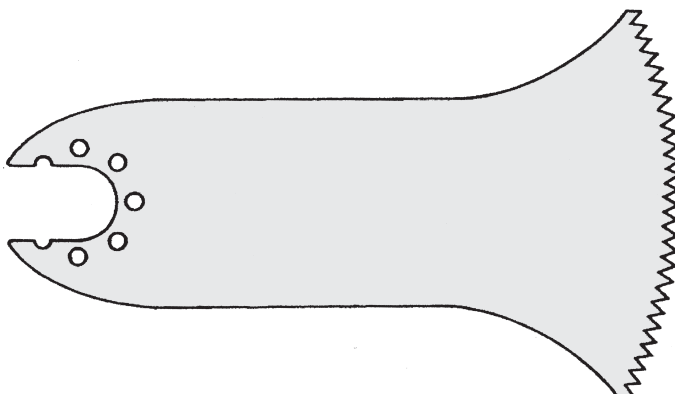
**95-349.35** Sterilisationsbehälter  
Container

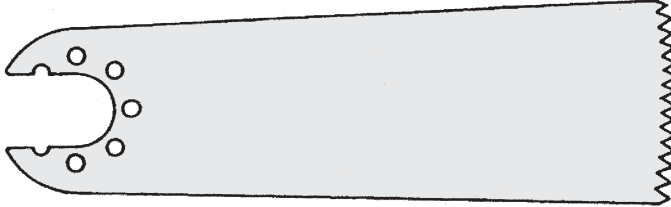
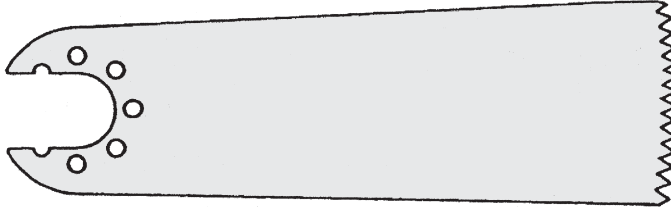
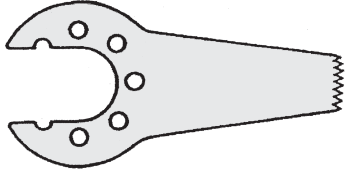
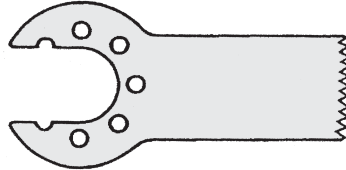
**95-349.36** Siebschaleneinsatz (2 Stück)  
Tray Set (2 pieces)

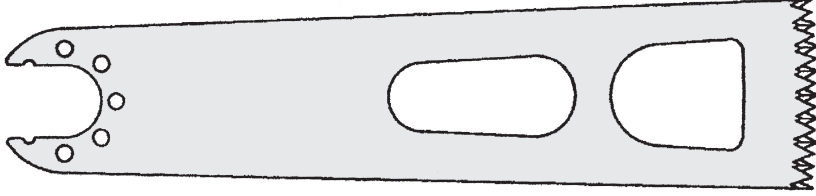
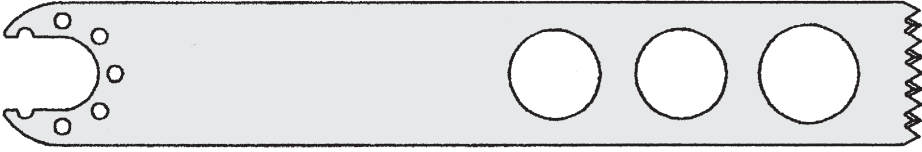


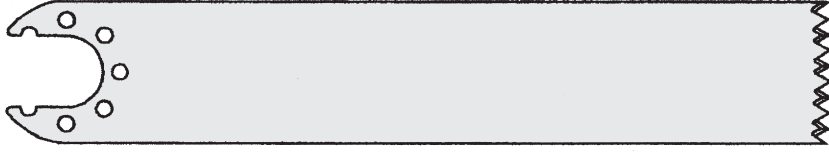


**95-349.40** Steriltrichter für Akku **95-349.05**  
Sterilizing funnel for battery **95-349.05**

**95-349.45** Hülse für Kirschnerdrähte  
Sleeve for Kirschner wires

Cat. No.	Blade Thickness	Cut Thickness	Tooth Pitch mm (TPI)	Useable Length mm	Blade Width
					
95-349.60	0.4	0.65	1.3 (20)	50	27
					
95-349.61	0.4	0.65	1.3 (20)	50	14
					
95-349.62	0.6	0.8	1.9 (20)	71	27
					
95-349.63	0.6	0.8	1.9 (13)	71	50

Cat. No.	Blade Thickness	Cut Thickness	Tooth Pitch mm (TPI)	Useable Length mm	Blade Width
					
95-349.64	0.8	1.0	1.9 (13)	71	27
					
95-349.73	1.0	1.2	1.3 (13)	71	27
					
95-349.66	0.4	0.65	1.2 (22)	27	6
					
95-349.67	0.4	0.65	1.2 (22)	27	14

Cat. No.	Blade Thickness	Cut Thickness	Tooth Pitch mm (TPI)	Useable Length mm	Blade Width
					
95-349.67	0.4	0.65	1.2 (22)	27	14
					
95-349.70	1.2	1.3	2.1 (12)	105	19
					
95-349.69	0.9	1.0	1.5 (17)	90	22
					
95-349.71	1.25	1.3	2.1 (12)	105	19
					
95-349.72	1.0	1.0	2.1 (12)	90	19



**Empfohlene Basis Grundausstattung => 95-349.00**  
**Recommended basic equipment => 95-349.00**

1 St. **95-349.02** Akku - Bohrmaschine mit Verschlussdeckel  
 1 Pcs. Battery-driven drill with closure cover

2 St. **95-349.05** Akku  
 2 Pcs. Battery

1 St. **95-349.10** Ladegerät / Tisch 220 V  
 1 Pcs. Charger / bench 220 V

1 St. **95-349.15** Dreibackenfutter bis ø 7,0 mm für Rund- und Dreikantschäfte mit Spannschlüssel  
 1 Pcs. Three-jaw-chuck up to ø 7.0 mm for round and triangular shanks with chuck key

Technische Daten für **95-349.02** Akku-Bohrmaschine

Gerätetyp: Typ BF	Akku - Bohrmaschine 95-349.02
Spannung:	9,6 Volt
Nennkapazität des Akkus <b>95-349.05</b> :	1,2 Ah
Drehzahl:	630 U / min
Max. Drehmoment:	6,5 Nm
Gewicht inkl. Akku:	1250 Gramm
Motorleistung:	70 Watt
Typ gemäß Richtlinie der EN 60601-1-2:1993 EN 60601-1:1990 + A1:1993 + A2:1995 MED.UMW Schutzart nach DIN EN 529	IP66

Technical data for **95-349.02** Battery-driven drill

Equipment type: type BF	Battery-driven drill 95-349.02
Voltage:	9,6 V
Rated capacity of <b>95-349.05</b> battery:	1,2 Ah
Speed:	630 rev / min
Max. torque:	6,5 Nm
Weight incl. Battery:	1250 grams
Motor output:	70 W
Type as per guideline of: EN 60601-1-2:1993 EN 60601-1:1990 + A1:1993 + A2:1995 MED.UMW Schutzart nach DIN EN 529	IP66

### Technische Angaben zu Akku **95-349.05**

Akku <b>95-349.05</b> ist ein Ni MH (Nickelmetallhydrid) - Akku <b>Typ: VA AA</b>
<b>Bei normaler Belastung:</b> 1,2 V - 1250 mAh 125 mA - 16h
<b>Bei hoher Belastung:</b> 1250 mA - 1,2 h

### Technical data for battery **95-349.05**

The battery <b>95-349.05</b> is a Ni MH (nickel metal hydrid) battery <b>Typ: VA AA</b>
<b>Under normal load levels:</b> 1,2 V - 1250 mAh 125 mA - 16h
<b>With high loads:</b> 1250 mA - 1,2 h

### Technische Daten zu Ladegerät **95-349.10 / 95-349.11**

<b>Gerätetyp:</b>	<b>Ladegerät 95-349.10</b>	<b>Ladegerät 95-349.11</b>
Nennspannung:	230 Volt	110 Volt
Nennfrequenz:	50 Hz	
Nennaufname:	14 VA	
Nenausgangsspannung:	12 V	
Nenausgangsstrom:	1100 mA max.	
Schutzklasse	II	
Schutzart nach DIN EN 529	IPX0	

### Technical data for charger **95-349.10 / 95-349.11**

<b>Equipment type</b>	<b>Charger 95-349.10</b>	<b>Charger 95-349.11</b>
Rated voltage:	230 V	110 V
Rated frequency:	50 Hz	
Rated input:	14 VA	
Rated output voltage:	12 V	
Rated output current:	1100 mA max.	
Protection class:	II	
Protection type as per DIN EN 529	IPX0	



# ORIHOMEDICAL

G m b H · I M P L A N T S

---

Hauptstrasse 5 · D-78589 Dürbheim  
Tel.: 0 74 24 / 94 03-40 · Fax: 0 74 24 / 94 03-43  
[www.orthomedical.de](http://www.orthomedical.de) · email: [mail@orthomedical.de](mailto:mail@orthomedical.de)

---